

### Beam-Adjustable High CRI LED Integrated Track Luminaire

**Introducing the new Apturi III Full Spectrum 97 CRI Integrated LED luminaire.**

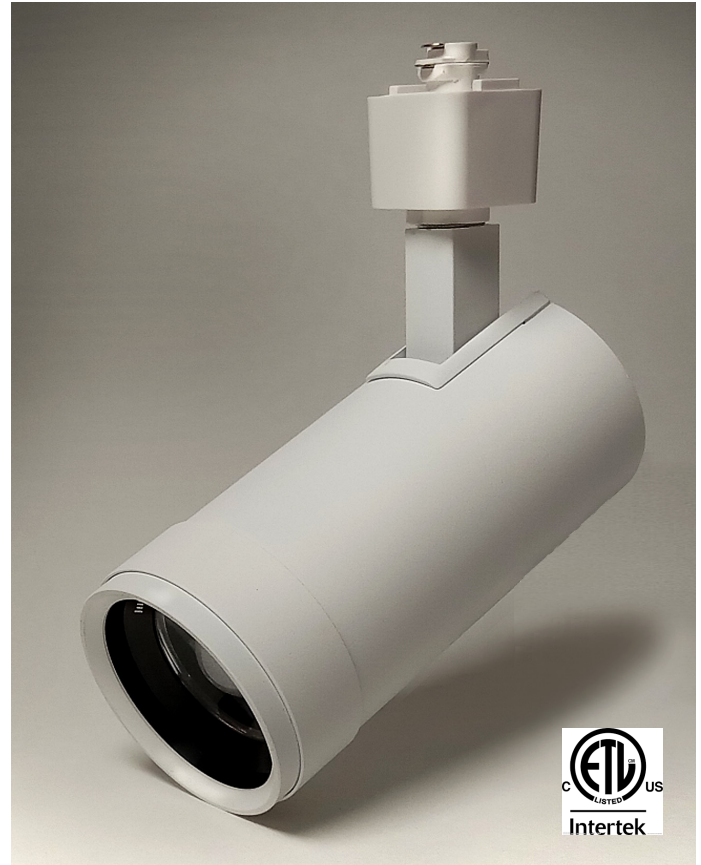
A complete, dimmable LED track lighting solution for discerning art galleries, museums, retail stores and more.

When illuminating artwork and displays, uncompromising colour accuracy and beam-angle control are critical. The elegant Apturi III provides you with both. A simple twist of the lens takes you from a narrow spot to broad wall-washing, with a range of 10 to 60 degrees.

Consuming only 15 watts, it produces over 1,400 lumens of light. Strict colour binning ensures that the light from each of Apturi III LED track head looks the same from one to the next.

Compatible with H-type track systems (Halo-compatible). J and L type track connectors available upon request.

Compatible with most common MLV & ELV dimmers.



## Optional Accessories

### Honeycomb Louver



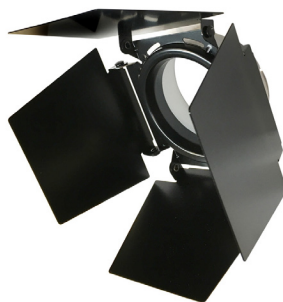
The honeycomb louver is an excellent glare control solution. With a Honeycomb Louver installed, viewing the light source from an oblique angle is more comfortable as it greatly reduces side glare.

It mounts on the front of the luminaire using a small discreet mounting ring, which is available in white or black.

The honeycomb itself is only available in black to prevent unwanted reflections.

The honeycomb louver can be combined with barn doors.

### Barn Doors



Barn doors are a versatile light-shaping tool, used to maintain focus on the work being lit and reducing or eliminating spill onto the surrounding wall or floor.

When used on a painting, it can create the effect that the work is illuminated from within.

Barn doors mount on the front of the luminaire using a small discreet mounting ring, which can be white or black.

The barn door itself is only available in black, to prevent unwanted reflections.

### Short Snoot



The short snoot is an alternate glare control solution. The snoot hides the light source when viewed from an oblique angle, making the viewer experience more comfortable.

It mounts on the front of the luminaire and comes in white or black.

### Ordering by SKU:

Luminaire SKU	Finish	Power	Dimensions	LED	Dimming	CCT	Lumens	CRI	Lens Angles
1367-15w-adj3K-w 1368-15w-adj3K-b	White Black	15w 15w	Length (body) 15.2 cm (6") Diameter: 7 cm (2.75") Weight: 700 g (1.5 lb)	Bridgelux Thrive	With common dimmers	3000K  (other CCTs available if ordering by Code, see next page)	1425	97+	10-60 degree continuously variable *

\* Note: colour temperatures other than 3000K and 4000K give wider beam angles due to their larger LES (Light Emitting Surface). The range is 15 - 80 degrees.

Accessory SKU	Description	Finish Details
1567-HC-W	Honeycomb Louver	White mounting ring, with black honeycomb
1568-HC-BK	Honeycomb Louver	Black mounting ring, with black honeycomb
1569-barn-W	Barn Doors	White mounting ring, with black barn doors
1570-barn-BK	Barn Doors	Black mounting ring, with black barn doors
1571-SNT-W	Short Snoot	White
1572-SNT-BK	Short Snoot	Black

### Lumicrest LED Lighting

1373 Queen St. W, Toronto ON, Canada M6K 1M1  
www.lumicrest.com

Phone 416.479.0132  
Toll free 1 877 910 1011  
Email info@lumicrest.com

# Product Configuration by Code

**Instead of ordering by SKU, you can also order by CODE. This method allows you to specify more colour temperature and track connector options. Here's how:**

## **A3- CCT - FINISH - CONNECTOR - ACCESSORY (OPTIONAL)**

Example: A3-30K-WH-HL-SN (Apturi3 3000K White Finish, Halo Track Connector, Snoot)

### **Available Colour Temperatures & Order Codes:**

Description (LED Colour Temperature)	Order Code
(Dim to Warm 3000K-1800K 90+ CRI *)	DTW
2400K 95+ CRI *	24K
2700K 95+ CRI *	27K
3000K 97 CRI	30K
3500K 95+ CRI *	35K
4000K 97 CRI	40K

\* Note: colour temperatures other than 3000K and 4000K give wider beam angles due to their larger LES (Light Emitting Surface). The range is 15 - 80 degrees.

### **Available Finishes & Order Codes:**

Description (Finish Colour)	Order Code
White	WH
Black	BK

### **Available Track Connectors & Order Codes:**

Description (Track Connector)	Order Code
H-type (Halo Compatible)	HL
J-type (Juno Compatible)	JN
L-type (Lightolier Compatible)	LT

### **Available Light Shaping Accessories & Order Codes:**

Description (Accessory)	Order Code
Honeycomb	HC
Barn Door	BD
Snoot	SN

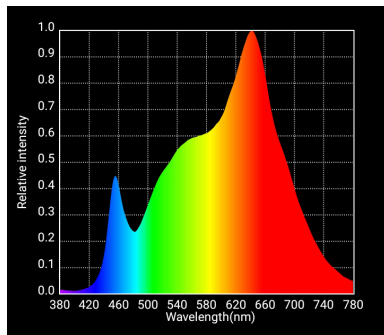
## **Lumicrest LED Lighting**

1373 Queen St. W, Toronto ON, Canada M6K 1M1  
www.lumicrest.com

Phone 416.479.0132  
Toll free 1 877 910 1011  
Email [info@lumicrest.com](mailto:info@lumicrest.com)

# Light Quality Data

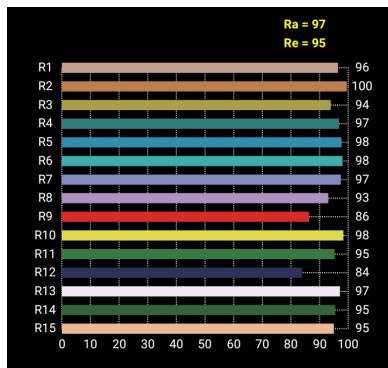
3000K



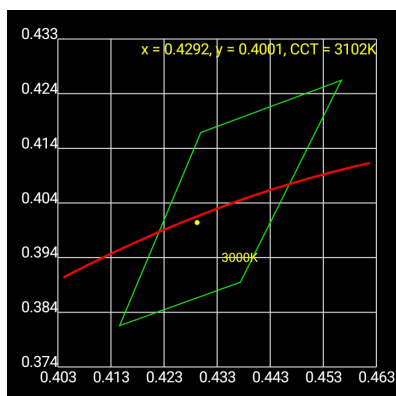
Spectrum

CCT	3102 K
Duv	-0.0005
CRI(Ra)	97
Re(R1~R15)	95
CQS	97
TLCI(Qa)	98.7

CRI (Colour Rendering) Data

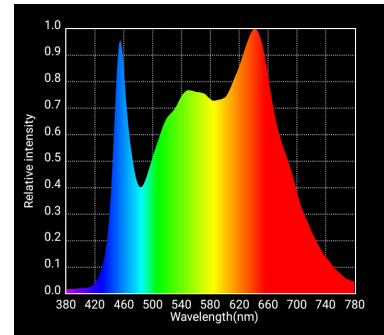


CRI R-values



ANSI Binning

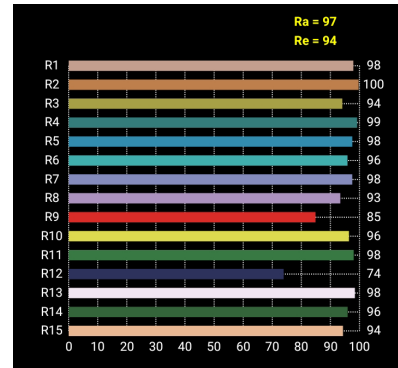
4000K



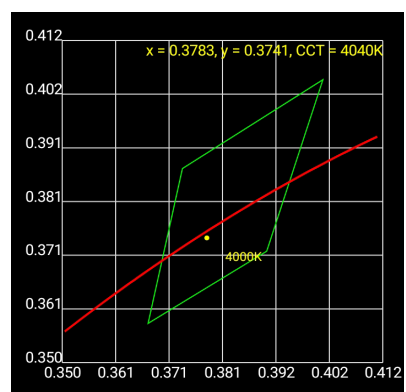
Spectrum

CCT	4040 K
Duv	-0.0006
CRI(Ra)	97
Re(R1~R15)	94
CQS	95
TLCI(Qa)	98.1

CRI (Colour Rendering) Data



CRI R-values



ANSI Binning

**Lumicrest LED Lighting**

1373 Queen St. W, Toronto ON, Canada M6K 1M1  
www.lumicrest.com

Phone 416.479.0132  
Toll free 1 877 910 1011  
Email info@lumicrest.com