

Self-Dimmable Framing High CRI LED Integrated Track Luminaire

Introducing the Apturi III SDFR Full Spectrum 97 CRI Integrated LED luminaire with individual dimming control (Self-Dimmable)

For optimal illumination of artwork and displays uncompromising colour accuracy, light-placement and dimming control are critical.

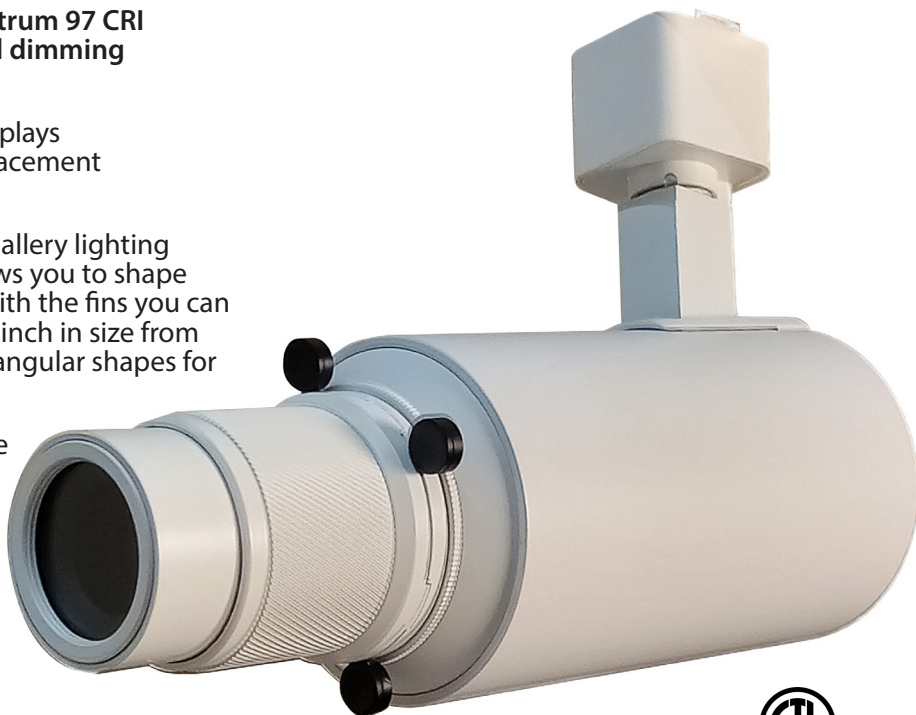
The elegant Apturi III SDFR is a precision gallery lighting instrument. The 4-fin framing shutter allows you to shape the light beam, with hard or soft edges. With the fins you can even create tiny shapes of light under 1/2 inch in size from 15 feet away. You can also create soft rectangular shapes for linear lighting effects.

To achieve the perfect balance of light, the dimming knob on the rear allows you to precisely dim the lumen output - from 100% to 0.1% to create the most subtle lighting effects.

At full output it produces over 1,400 lumens of light while using only 15 watts of power.

Strict colour binning ensures that the light from each Apturi III LED track head looks the same from one to the next.

Compatible with H-type track systems (Halo-compatible). J (juno) and L type (Lightolier) track connectors available upon request.



Moveable shutter fins for precise optical shaping control



The Apturi III SDFR is self-dimmable via integrated control, from 0.1% to 100% intensity

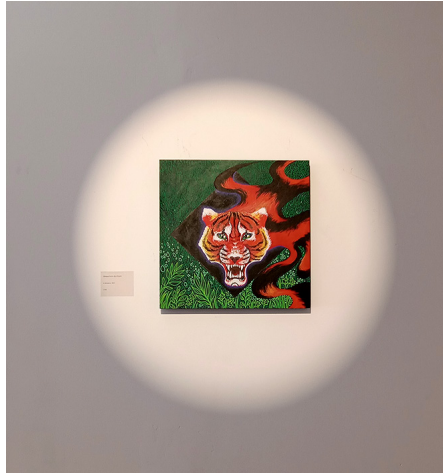
Lumicrest LED Lighting

1373 Queen St. W, Toronto ON, Canada M6K 1M1
Phone 416.479.0132 Toll free 1 877 910 1011
www.lumicrest.com email: info@lumicrest.com

Examples of possible lighting effects



Hard-edged circle



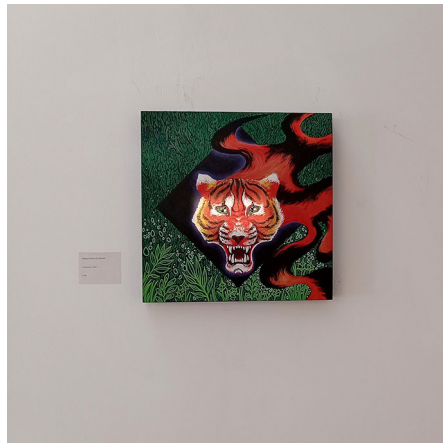
Soft-edged circle



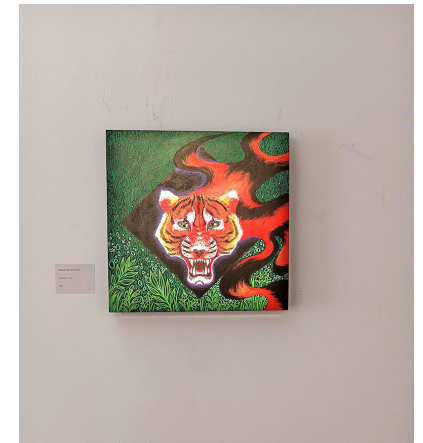
Hard-edged partial circle



Soft-edged rectangle



Soft-edge rectangled highlighting a portion of a work



Soft-edged square highlighting entire work without spill onto wall



Hard-edged quadrilateral with curved side



Hard-edged quadrilateral



Soft-edged quadrilateral

Product Specifications and SKUs

Luminaire SKU	Finish	Power	Dimensions	LED	Dimming	CCT	Lumens	CRI
1575-15w-SDFR-3K-w 1576-15w-SDFR-3K-b	White Black	15w 15w	Length (body) 15.2 cm (6") Diameter: 7 cm (2.75") Weight: 700 g (1.5 lb)	COB	With integrated knob (not for use together with common wall dimmers)	3000K 3000K (4000K available upon request)	1425 1425	97+ 97+

Product Configuration by Code

Instead of ordering by SKU, you can also order by CODE. This method allows you to specify more colour temperature and track connector options. Here's how:

A3SDFR- CCT - FINISH - CONNECTOR

Example: A3SDFR-30K-WH-HL (Apturi3SDFR 3000K White Finish, Halo Track Connector)

Available Colour Temperatures & Order Codes:

Description (LED Colour Temperature)	Order Code
3000K 97 CRI	30K
4000K 97 CRI	40K

Available Finishes & Order Codes:

Description (Finish Colour)	Order Code
White	WH
Black	BK

Available Track Connectors & Order Codes:

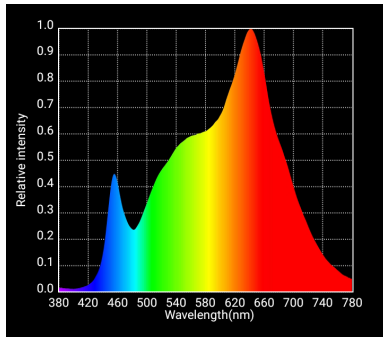
Description (Track Connector)	Order Code
H-type (Halo Compatible)	HL
J-type (Juno Compatible)	JN
L-type (Lightolier Compatible)	LT

Lumicrest LED Lighting

1373 Queen St. W, Toronto ON, Canada M6K 1M1
 Phone 416.479.0132 Toll free 1 877 910 1011
 www.lumicrest.com email: info@lumicrest.com

Light Quality Data

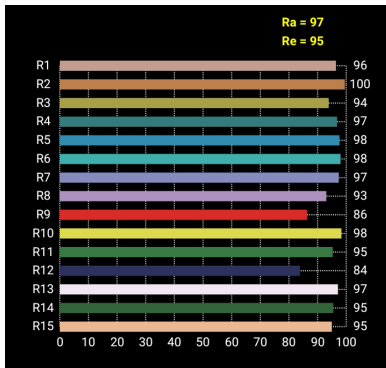
3000K



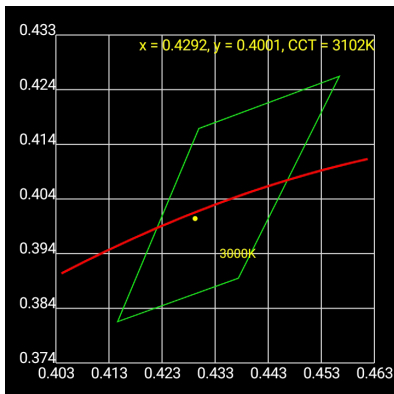
Spectrum

CCT	3102 K
Duv	-0.0005
CRI(Ra)	97
Re(R1~R15)	95
CQS	97
TLCI(Qa)	98.7

CRI (Colour Rendering) Data

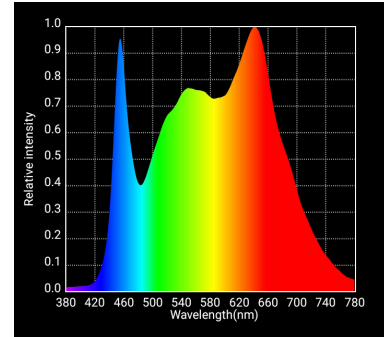


CRI R-values



ANSI Binning

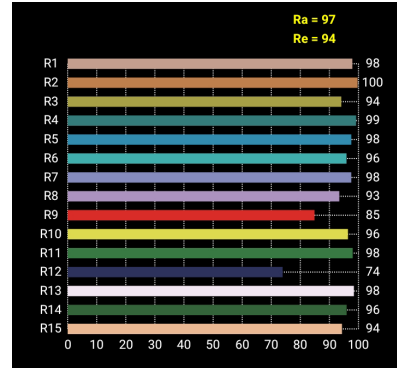
4000K



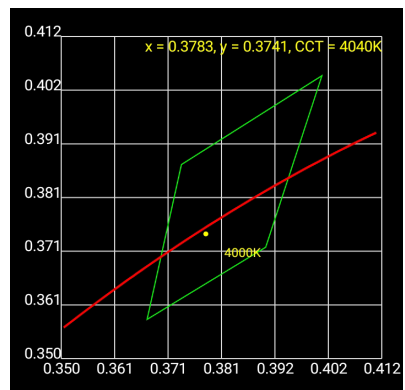
Spectrum

CCT	4040 K
Duv	-0.0006
CRI(Ra)	97
Re(R1~R15)	94
CQS	95
TLCI(Qa)	98.1

CRI (Colour Rendering) Data



CRI R-values



ANSI Binning

Lumicrest LED Lighting

1373 Queen St. W, Toronto ON, Canada M6K 1M1
www.lumicrest.com

Phone 416.479.0132
Toll free 1 877 910 1011
Email info@lumicrest.com